

## SANDWELL CHILDREN'S SERVICES - Overview

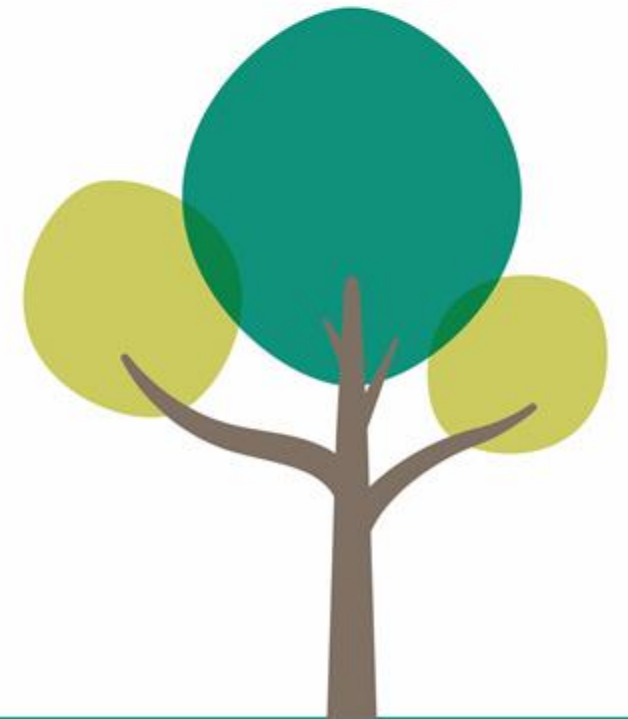


### COMMUNICATION AND INFORMATION

- Across the Council via daily Sitrep (including Sandwell Children's Trust)
- With partners (daily communication to schools, weekly partner safeguarding)
- Several times weekly with DfE and Ofsted
- Regional and national
- Voices of children, young people and families

### VULNERABLE CHILDREN

- Campaigns
- Daily Vulnerable Children Group meeting
- Detached Youth Work
- Surge planning
- Strategic Commissioning



# Impact of COVID-19



## EDUCATION

- Early Learning and Childcare arrangements
- Schools opening for vulnerable children and key worker children
- Schools supporting all pupils
- Schools opening for wider groups of pupils
- Key issues: risk assessments and decision making, PPE, practical and logistical arrangements, transport, ever-changing/developing guidance
- Council supporting children's learning and play at home, including IT for vulnerable children
- Examinations and assessment
- Services adapting: Connexions, Employment and Skills, Admissions Appeals
- Assumptions: increased EHE, increased pupil anxiety/school refusals, widening attainment gap



## Phased increase in pupils attending primary schools

Primary from 1<sup>st</sup> June – *Rec, Y1 and Y6 plus vulnerable and critical worker's children*

- All primary schools now have an offer of more places based on space available
- Each school has devised their own plan based on their risk assessment

Figures last week showed: -

- 23 schools open to all three year groups
- 52 schools open to 2 or more year groups
- 2000+ primary pupils in school each day
- 14% of all Reception LA cohort attending
- 11.3% of Y1 LA cohort attending on any given day
- 15.3% of Y6 LA cohort attending on any given day

## Phased increase in pupils attending secondary

Secondary from 15<sup>th</sup> June – *Y10, Y12 plus vulnerable and critical worker's children*

- Up to 25% of the cohort is allowed on site at any one time.

Figures last week showed: -

- All secondary schools welcomed Y10 and Y12 pupils back
- 500+ Y10 pupils at school each day
- 12%+ of cohort attending on any one day (rota through the week)
- Y12 – smaller LA cohort – up to 16% attendance at any one time
- Schools are reporting approximately 60% of Y10/Y12 pupils have so far attended



Overall school attendance pre June 1<sup>st</sup> was 1,100. It is now 4,300 and rising daily

